



### Hello Readers

A funny thing is happening to Sandhill as we travel around the world and meet with clients.

When we are introduced to clients for the first time, we are actually finding that they already know of Sandhill.

When asked how they know of us, we hear that it's through our newsletters and Linked-in connections.

For an organization such as Sandhill, to hear this helps us understand that clients value the information we send out via our newsletters and Linked-in

Well we have lots in store as we continue to be CA's key partner for ERwin in many parts of the world.

Not only has R8 been officially launched, but we are hearing about some very positive announcements regarding ERwin that will be happening in the near future. You can be sure that we will bring this exciting news to our readers in subsequent newsletters.

As always part of this column is to inform you of the latest version of ERwin. As of this time it is V7.3.10 (build 2496) And V8.0 is build (build 2589)

If you would like a copy of these build's and you are on maintenance, please let us know.

Regards

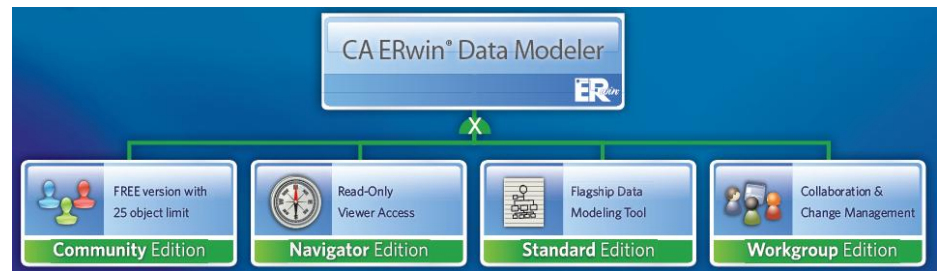
Robert Lutton,  
[Robert.lutton@sandhillconsultants.com](mailto:Robert.lutton@sandhillconsultants.com)  
Editor, ERwin Times



### CA ERwin R8 is officially released

CA ERwin R8 was released on Feb 18, 2011. This version is one of CA's most important releases in several years. In the past several weeks, there has been a lot of discussion around R8.

As CA ERwin R8, starts to gain momentum in the user community, you will see more and more of our quarterly newsletters focus on the R8 release. However we understand that a vast majority of ERwin users are on some version of R7, although we still come across an occasional user who still has a V4.x model. We will continue to publish tips and tricks on both ERwin V8 and V7. However as CA ERwin R8 has just been released this newsletter will be focused on key CA ERwin R8 information.



The best way for users to catch up on R8 would be to review the information contained in the following links. First, CA have produced over 20 [ERwin Videos](#) on key concepts within the ERwin Standard Edition. This is a great place to start your research.

In addition, recently Sandhill was involved in a webcast with the ERwin modeling community, in which Sandhill, along with another user delivered some of our impressions or ERwin R8 so far. Click on this [Webcast link](#) to review it

What we will review here are some of the items that have not been talked about, that should be of interest to the ERwin user who is thinking of moving to R8.

There is a new licensing mechanism in R8. The first thing that must be said about this is that CA are working out several kinks in the current process. Here is the way it works today. (Please note that CA are reviewing several enhancements to this process and we will have more updates in our next newsletter on this issue) When you install CA ERwin R8, in order to get your full license key, you have to provide a MAC ID from that computer back to CA, before they can issue a permanent R8 license key.

For some ERwin users this is not an issue. However for larger shops, or for Government clients, there are several issues (That we don't need to list, but CA are aware of) that will prevent these clients from moving forward. This is what CA is currently looking into. Expect more information on this shortly.

You may wonder why CA has introduced this new licensing process. In V7.x the license process was a contractual license and not enforced by any license key on any PC. CA believes that in some parts of the world, there was a loose adherence to properly paying for each license, hence the new license program. So stay tuned to this issue.

For users who want to learn how to identify the correct MAC id, license and Install ERwin R8 correctly, please e-mail [Robert.Lutton@sandhillconsultants.com](mailto:Robert.Lutton@sandhillconsultants.com).

The next issue is bundling. CA has changed the current bundling in V8. ERwin and Model Manager are now bundled together and called ERwin Workgroup edition. CA has also updated their enterprise bundle, which used to have process modeler, now it has swapped out ERwin Process Modeler and replaced it with 2 ERwin Navigator Edition licenses.

## CA ERwin R8 is officially released... Continued

For new users who purchase the CA ERwin workgroup edition, they will now receive a license for ERwin Model Manager. This provides the workgroup user with a central repository to manage all their models. In the past newsletters we have not discussed ERwin's Model Manager, but we have already seen an increase in clients wanting to purchase the ERwin Workgroup edition for the benefit above and as such we feel that we should address some of the highlights of Model Manager here, but follow up with more articles in the future.

While several clients have Model Manager, several others will be new to the value of having a centralized repository for all your models.

First and foremost, CA ERwin Model Manager is a separate product and someone must be assigned to the management and maintenance of it. For more information on what is, please click on the following link. [ERwin Model Manager](#).

If you need help installing, configuring and getting your team trained on ERwin Model Manager then you may want to have a partner like Sandhill help you. Contact Sandhill if you would like to see our Model Manager implementation services offering.

[R8 Upgrade Training](#). Another way to get up to speed is by taking an R8 conversion class. As our readers know, Sandhill has officially launched our ERwin Upgrade Training in 20 cities across North America, and it is available in other locations around the world. Our registration in N.A. is going very well with over 50% registration in several locations. We are enclosing a review of our [TOC](#) and a sample of the [material](#) that we cover. If you are interested in Sandhill delivering this one day hands on class for your company, please contact [Robert.Lutton@sandhillconsultants](mailto:Robert.Lutton@sandhillconsultants) for N.A., [Simon.Carter@sandhill.co.uk](mailto:Simon.Carter@sandhill.co.uk) for UK, and Europe and [Jeff.Harris@sandhillconsultants.com](mailto:Jeff.Harris@sandhillconsultants.com), for South Africa.

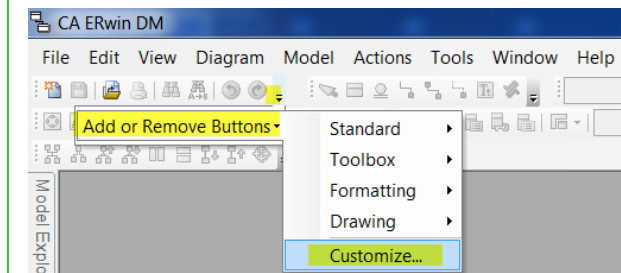
There is a lot in R8, and we look forward to working with all our clients in the near future and keeping them up to date on CA ERwin.

## Hot Keys for ERwin R8 - By Ed Bantegui

The list below are the standard hot-key assignments for R8 features/functions. These are standard shortcuts key strokes used in the ERwin application which can be modified to suit the users preference.

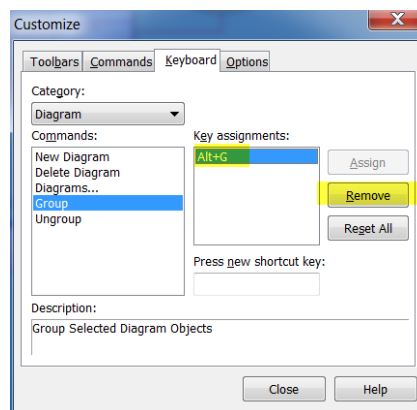
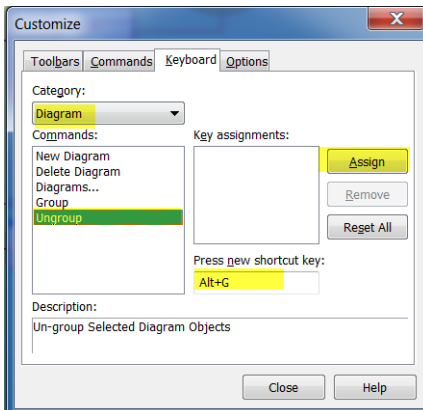
CTRL + A - Select All  
CTRL + B - Invoke Bulk Editor  
CTRL + C - Copy  
CTRL + D - Invoke Advisory  
CTRL + E - Invoke Explorer  
CTRL + F - Find  
CTRL + G - go to  
CTRL + H - Replace  
CTRL + L - Call Action Log  
CTRL + N - Create New Model  
CTRL + O - Open Model  
CTRL + P - Print Menu  
CTRL + W - Open Over Viewer

Customizing Hot Keys to work for your own personal preference is accomplish by customizing the tool Keyboard shortcut keys.



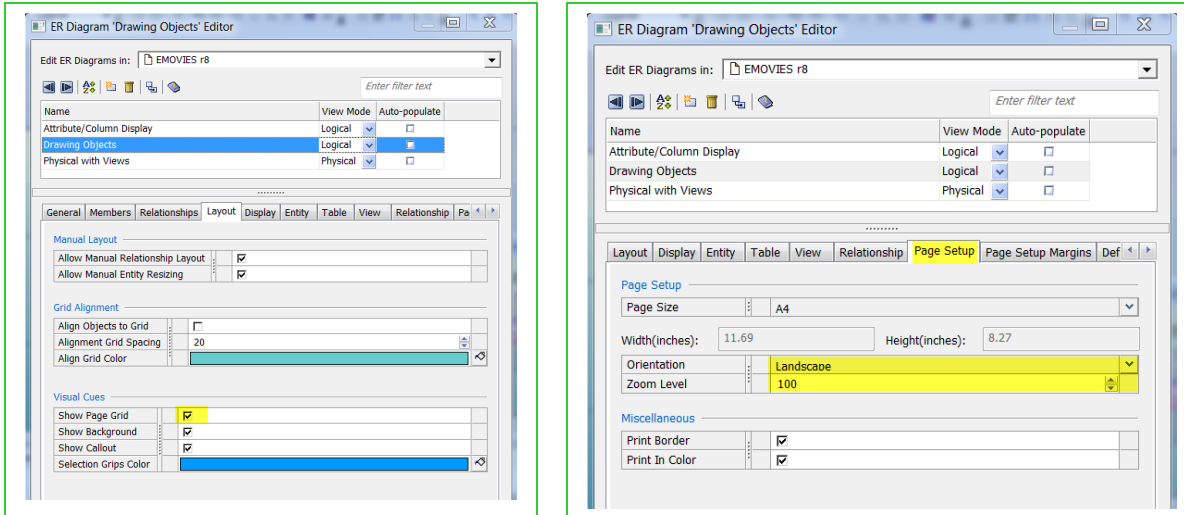
The image below shows how a users can assign and/or remove shortcuts for each category for Diagrams.

In the example, the shortcut assigned to Group and Ungroup objects in a diagram can be specified by actually typing the key strokes under the "new shortcut key:" selection.

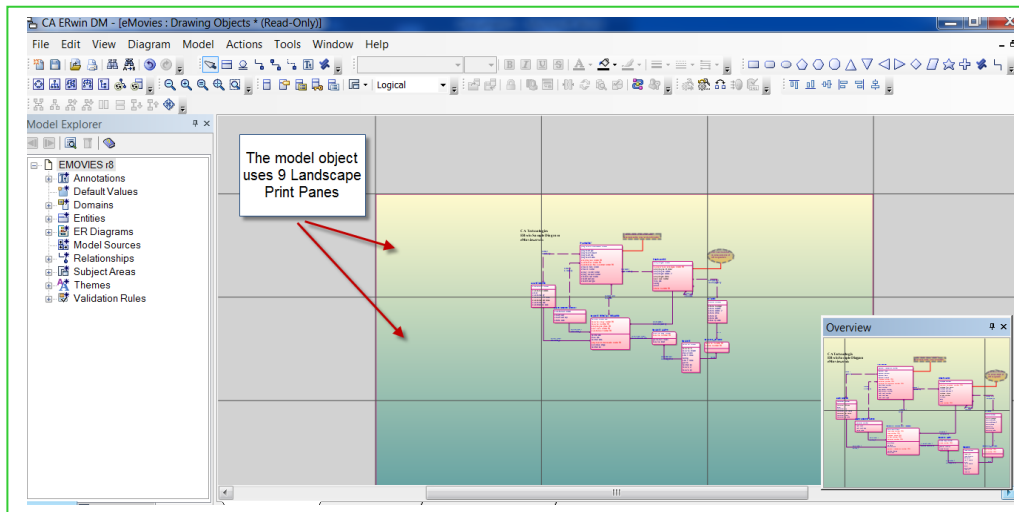


## ERwn WYSIWG Printing : ERwin Fit to page (how to)

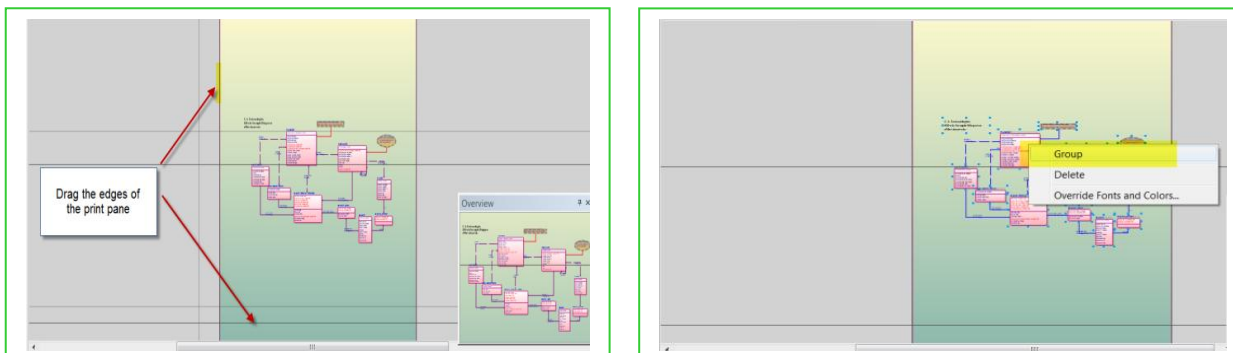
In ERwin R8, each output to your printer can be previewed using windows standard file print menu. But before you print it is best that the user understand the print layout of the ERwin diagram. This is accessible using the ER Diagram Object editor. (Right - click on open diagram and select PROPERTIES)



Looking at the default setting you will see that the objects in the diagram currently for the DRAWING

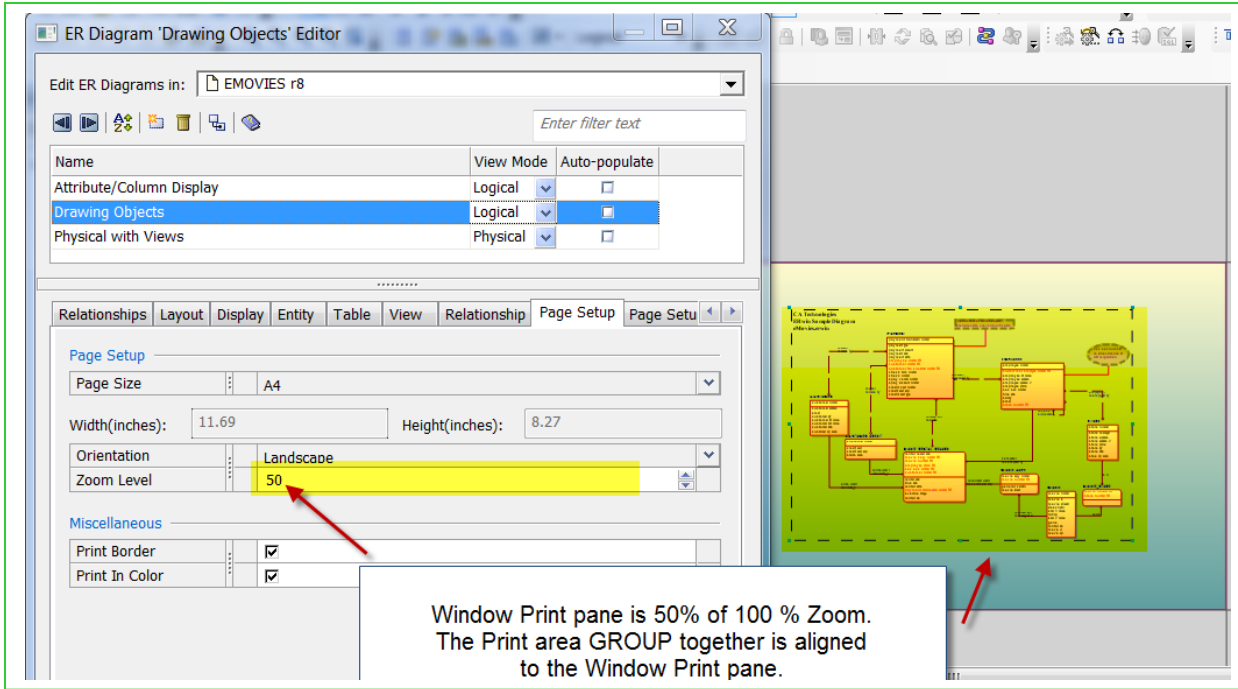


To make the window pane bigger drag the edge of a print pane or in this example use the diagram page setup to reduce.



## ERwn WYSIWG Printing : ERwin Fit to page (how to)

To fit all the objects into one print pane the user needs to Select all Objects and group them (Ctrl- A, right click on the objects and GROUP) then move them all into the one window pane. The "Gray" Landscape printing area shows the reduction of printing page from 100 % to 60 % to 50% where the GROUPED ERwin objects can finally "Fit to Page". Aligning the ERwin Objects to the Window Print Pane.



Name	View Mode	Auto-populate
Attribute/Column Display	Logical	<input type="checkbox"/>
Drawing Objects	Logical	<input checked="" type="checkbox"/>
Physical with Views	Physical	<input type="checkbox"/>

Page Setup

Page Size: A4

Width(inches): 11.69      Height(inches): 8.27

Orientation: Landscape

Zoom Level: 50

Miscellaneous

Print Border:

Print In Color:

Window Print pane is 50% of 100 % Zoom.  
The Print area GROUP together is aligned to the Window Print pane.

The print setup for each diagram must be done for both logical and physical side of the model. The Ctrl + P can also be used to activate the print menu. Selection of the PRINT PREVIEW of the ERWIN EMOVIES MODEL.

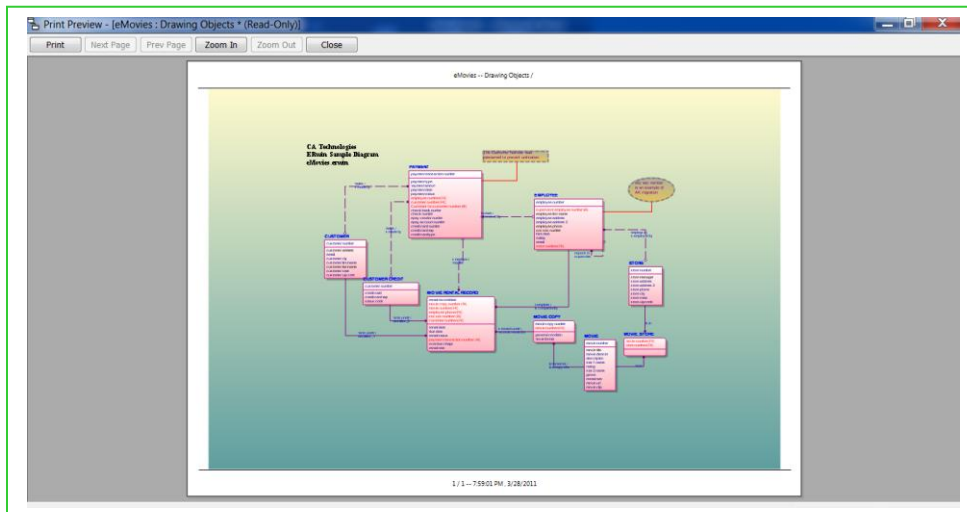


Diagram Print Preview note:

WYSIWYG print preview of the emovies.erwin model provided in the ERwin R8 ...c:\programs files...Backup\samples\ folder of the Default ERwin R8 install folders. ( The print preview was subjected to the steps outlined above to FIT the ERwin Diagram to Page).