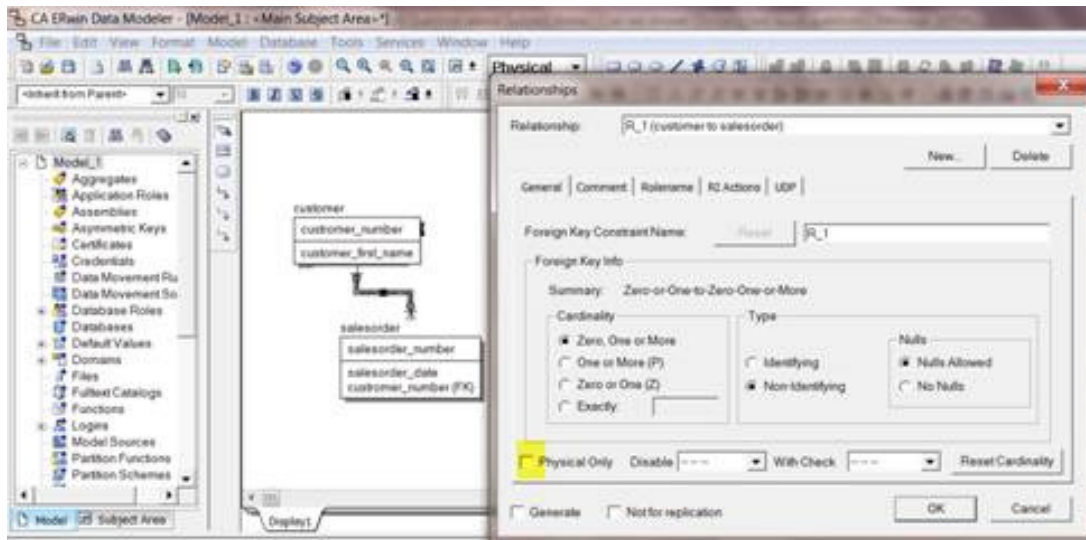


How do I hide Relationship lines.

1. Go to the physical side on the model and go to the relationship editor properties of the relationship and uncheck the "generate" button.
2. Go to the relationship display properties and uncheck "un-generated relationship" selection should also be uncheck.

This will make the physical relationship line disappear in the physical side of the model.



Uncheck the un-generated relationships.

