

# erwin® Safyr Option

## AT A GLANCE

erwin Safyr Option allows you to extract metadata from a wide range of ERP, CRM and other cloud-based systems and convert their proprietary data dictionaries, complete with customisations, into intuitive erwin data models. This helps you understand the data structures and definitions, enabling you to reduce the risk inherent in complex data management processes and better leverage your strategic information assets.

## KEY BENEFITS/RESULTS

- Integrate information from packaged applications into your overall data architecture, breaking down organisational data silos
- Better understanding and awareness of business-critical information assets
- Increased data fluency, efficiency, confidence and accountability
- Remove the need for specialised knowledge and technical infrastructures

## BUSINESS CHALLENGES

As organisations strive for data-centricity and a data-driven approach to business, they look for new ways of innovating and capturing relevant actionable data streams. This innovation is causing a complete transformation of how we approach data storage and management - creating a new hybrid data architecture.

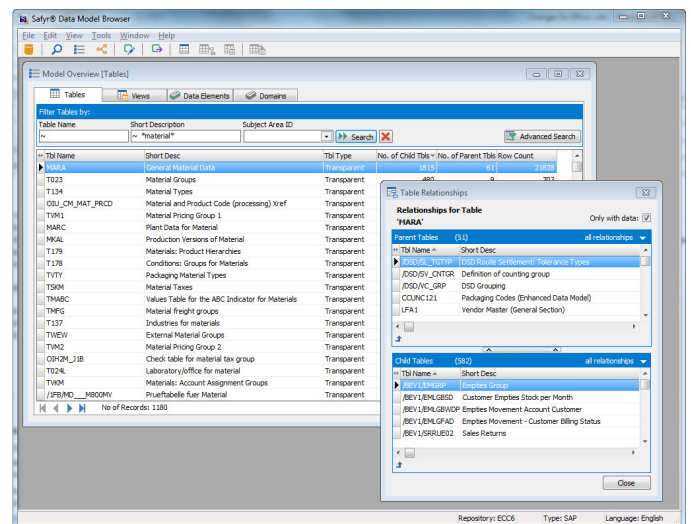
Particularly with ERP, CRM and other systems, information is often locked within proprietary systems, requiring specialised knowledge to integrate these systems with other organisational data sources.

Hence, organisations strive to deliver an agile and effective data management approach that promotes increased strategic data usage while mitigating risks.

## KEY FEATURES

- Extract important metadata from your ERP systems for modeling and analysis
- Relationship mapping and navigation to see how tables are related to each other
- Create and manage subsets of metadata
- Search and browsing for intuitive metadata discovery - keyword search, object filtering, metadata drill-down and drill-across, hierarchical navigation, automated inference of undefined relationships and generation of ERP application statistics
- Model creation through erwin Data Modeler using business friendly names
- Visual design of ERP data assets
- Unified approach and single source of truth
- Supports: SAP\*, SAP Business Warehouse (BW)\*, SAP S/4HANA, Microsoft Dynamics AX 2012, Salesforce\*, Oracle E-Business Suite\*, Oracle PeopleSoft Enterprise applications\*, Oracle J.D.Edwards EnterpriseOne\*, Oracle Siebel\*
- Repository hosts are supported in the following database environments: Oracle, Microsoft® SQL Server, Sybase SQL Anywhere, IBM DB2® and SQLite

\*Contact us for versions supported.



[www.sandhillconsultants.com](http://www.sandhillconsultants.com)



(905) 847-5882



@sandhillna



[linkedin.com/company/sandhill-consultants-na](https://www.linkedin.com/company/sandhill-consultants-na)