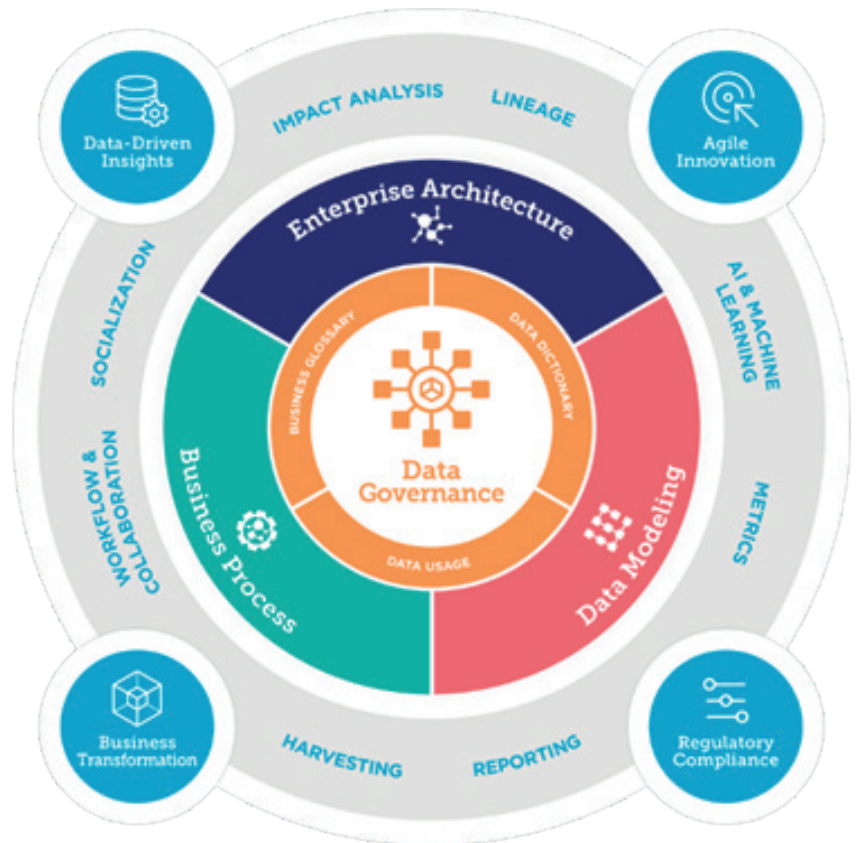


# What's New in erwin DM r9.8

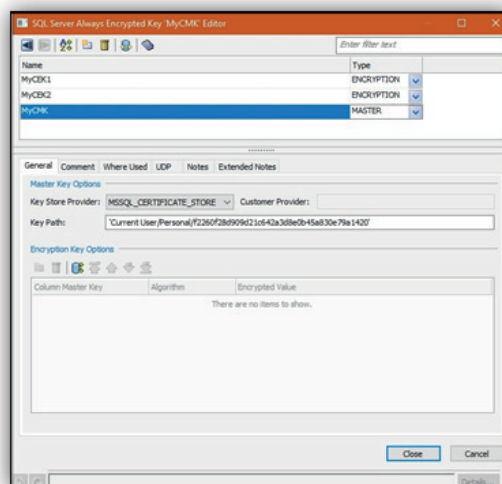
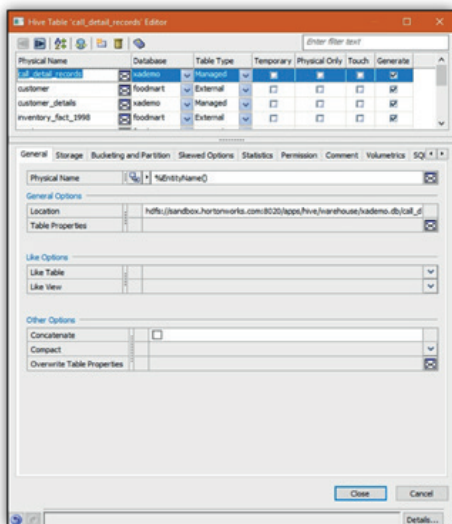
erwin breaks down the data management silos that naturally occur when new technology or deployment models are adopted. By providing a data modeling solution that supports any data from anywhere (Any2), we give organizations a unified approach, harmonizing platform inconsistencies to deliver a single source of the truth for enterprise business data.

We offer a well-governed, contextual and integrated enterprise data architecture that's easily understood and actionable for driving strategic data usage and business value. Our collaborative, self-service data discovery and governance capabilities enable stakeholders to understand data structures and their business purpose, as well as points of integration in addition to the business rules, alignment and terminology required to effectively govern and leverage data for analytics, operational excellence and business intelligence.



## Expanding Our Any<sup>2</sup> Modeling Support for Mission-Critical DBMS Targets

erwin DM 9.8 delivers new and enhanced support for key DBMS platforms, including round-trip modeling and schema engineering support for Hadoop Hive, PostgreSQL 9.6.3 and MS SQL Server 2016. We've also included certification for Teradata v16 and Oracle 12c R2.



By supporting the core functionality of these DBMS platforms, erwin DM optimizes an organization's analysis and design efforts, enhancing the data modeler's ability to document and generate database objects and properties. Leveraging these new databases results in a higher modeling ROI because teams can more effectively use their database platform with a model-driven approach.

Then your data modeling team can extend its reach beyond traditional relational platforms to incorporate "big" data, Hive-based modeling in a single tool. Ultimately, this greatly enhances an organization's ability to migrate modeling metadata between relational and "big" data environments.

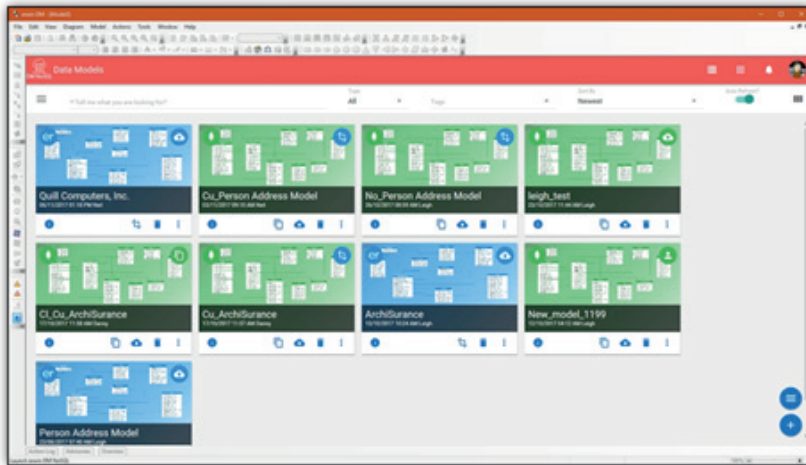
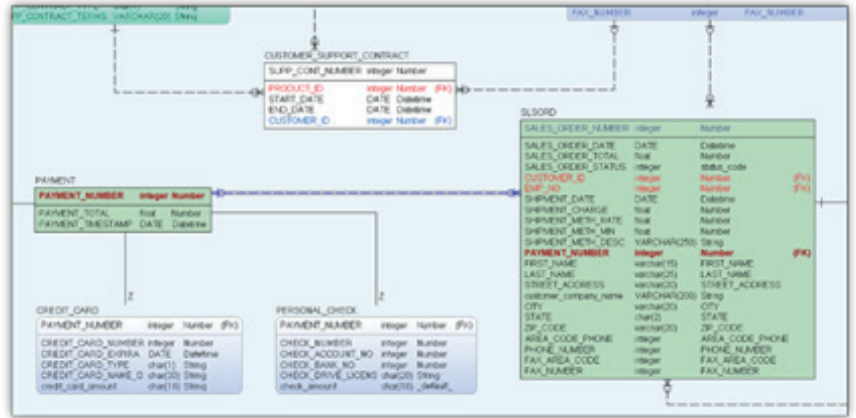
## Enhancing Data Modeler Productivity and Capability

erwin DM r9.8 includes enhanced visualization, modeling and integration capabilities to improve the overall erwin DM user experience. These enhancements include:

### PK/FK Auto Highlighting on Relationship Select

enhances the modelers ability to visualize schema constructs, navigate complex data models, and leverage the model as a communication and collaboration vehicle for better interactions with business stakeholders.

**DDL Preview Tab in Guided Editors** provides a detailed view of the code generated by erwin DM for the different schema constructs (tables,



columns, constraints, etc.) at the individual object level without the need to generate model-level schema. This code can be easily shared with database administrators and other data management professionals for consistent DB object creation and management.

**erwin Platform Integration w/ erwin DM NoSQL** enables sharing of metadata with all erwin solutions for a “single version of truth” governance capability and data consistency. Customers will only have to create metadata once, and it can be used or managed within any erwin solution. It also allows erwin DM users to incorporate erwin DM NoSQL into the erwin DM interface to better facilitate all data modeling needs.

## Updated Technology for Increased Data Modeling Agility

Adding support for new database sources and/or new database versions and migration from certificate-based licensing increasing the agility of erwin DM users. These enhancements include:

**Database Abstraction Layer (DBAL)** for creating and managing externalized and automatically recognized database “plug-ins.” By making DBMS support external to our solution mainline code, we can add new sources or update existing ones quicker and more efficiently, without having to wait for a new “compiled” erwin DM release.

**Self-Service, Activation-Based Licensing** improves the overall solution experience by allowing users to quickly and easily manage (install, remove, change) most workstation licenses without assistance from the erwin Licensing Team.

## For more information, please visit [www.sandhill.co.uk](http://www.sandhill.co.uk)

erwin, Inc. provides the only unified software platform combining data governance, enterprise architecture, business process and data modeling. Delivered as a SaaS solution, these technologies work together to unlock data as a strategic asset so all enterprise stakeholders can discover, understand, govern and socialize data to mitigate risk, improve organizational performance and accelerate growth. For more than 30 years, erwin has been the most trusted name in data modeling and its software foundational to mission-critical data programs in government agencies, leading financial institutions, retailers and healthcare companies around the world.