

# SAP PowerDesigner Data Architect



SAP PowerDesigner DataArchitect allows organizations to manage complex information architectures and visualize the potential impact of new technologies before implementing them. In addition, Data Architect allows the integration of multiple model types using automatic link-and-sync technology for project-wide or enterprise-wide impact analysis while streamlining communication and collaboration to increase your organization’s responsiveness to change.

### Graphical Impact and Lineage Analysis

The Impact and Lineage functionality displays the results of an analysis showing all the impacted and lineage objects in a tree format. Before you perform an action on a model object, such as deleting a table or changing the datatype of a primary key column, you can preview which other objects will be impacted (impact analysis) and identify the objects that take part in the definition of the object (lineage analysis). You can generate the analysis to an impact analysis model to review it in a diagram and save it for future reference.

### Link and Sync Technology

The PowerDesigner Modeling environment allow you to create and exploit complex references between objects to model connected systems and view them in many ways. Instead of defining this same object and all its accompanying metadata multiple times, PowerDesigner allows you to link them together, and provides powerful tools for tracking and analyzing the dependencies between them.

### Live Database Reverse Engineering

PowerDesigner can create a database model from an existing database on a number of different database platforms. Physical data models graphically show the structure of a database, so you can see how database elements, such as tables and views, relate to each other without showing the actual data. This can streamline creating a new database or understanding the structure of an existing one.

### Business Glossary Model

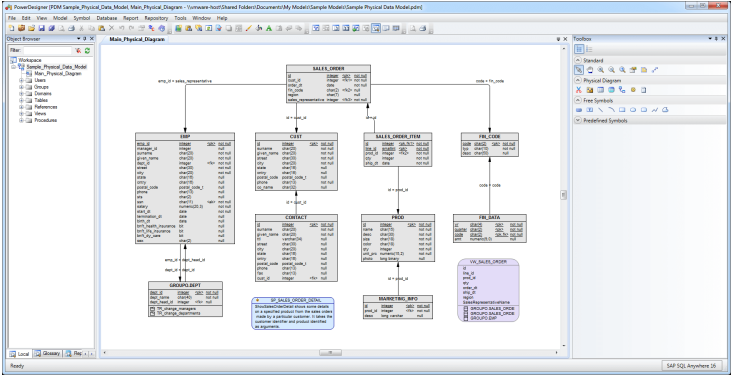
The PowerDesigner Glossary Model captures and organizes the terminology used to standardize the naming of your model objects. In addition, the Glossary provides auto-completion for object names and model checks to ensure compliance.

### Web Portal

The PowerDesigner Portal displays the contents of your PowerDesigner repository in your web browser. Content can be shared with a wide audience, including those who are not PowerDesigner users. Users can edit object descriptions directly in the Browser.

### Dataflow Mapping

The Mapping Editor provides a graphical interface for creating and viewing mappings between models or between meta-models. It provides a global view of all the mappings to objects in your model, allowing you to quickly identify those which are mapped and unmapped.



[www.sandhillconsultants.com](http://www.sandhillconsultants.com)



(905) 847-5882



[info@sandhillconsultants.com](mailto:info@sandhillconsultants.com)



[linkedin.com/company/sandhill-consultants-na](https://www.linkedin.com/company/sandhill-consultants-na)



[@sandhillna](https://twitter.com/sandhillna)