

SAP PowerDesigner Enterprise Architect



PowerDesigner Enterprise Architect is a comprehensive modeling and metadata management tool that offers a model-driven approach to improving business, data, application, and technology architectures.

PowerDesigner improves individual and team productivity by streamlining communication and collaboration with unique impact analysis and design-time change management. PowerDesigner includes the Enterprise Repository for team-based central metadata management and Web Portal metadata sharing.

Graphical Impact and Lineage Analysis

The Impact and Lineage functionality displays the results of an analysis showing all the impacted and lineage objects in a tree format. Before you perform an action on a model object, such as deleting a table or changing the datatype of a primary key column, you can preview which other objects will be impacted (impact analysis) and identify the objects that take part in the definition of the object (lineage analysis). You can generate the analysis to an impact analysis model to review it in a diagram and save it for future reference.

Link and Sync Technology

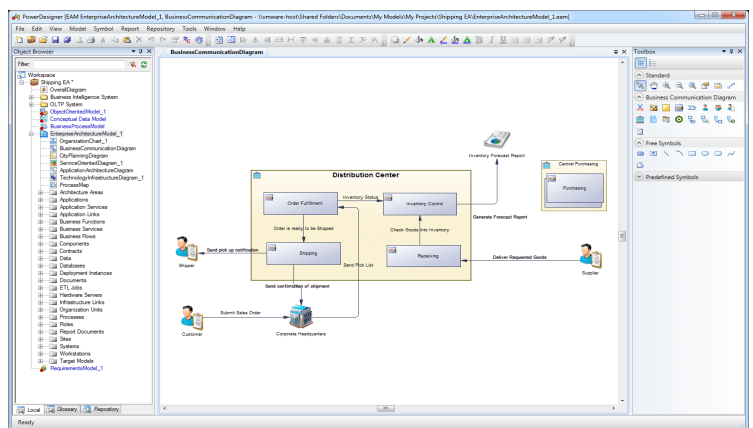
The PowerDesigner Modeling environment allow you to create and exploit complex references between objects to model connected systems and view them in many ways. Instead of defining this same object and all its accompanying metadata multiple times, PowerDesigner allows you to link them together, and provides powerful tools for tracking and analyzing the dependencies between them.

Document Generation

Provide secure, controlled access to metadata through wizard-driven lists, multi-model documents, and fully hyperlinked Web reporting. Share documents to foster project-wide collaboration and communication, including with non-modelers.

Business Glossary Model

The PowerDesigner Glossary Model captures and organizes the terminology used to standardize the naming of your model objects. In addition, the Glossary provides auto-completion for object names and model checks to ensure compliance.




Web Portal

The PowerDesigner Portal displays the contents of your PowerDesigner repository in your web browser. Content can be shared with a wide audience, including those who are not PowerDesigner users. Users can edit object descriptions directly in the Browser.

Dependency Mapping

Accurately document dependencies between any model object. Create comprehensive mapping definitions used in data dictionary definitions, impact analysis, and change management.

www.sandhillconsultants.com

 (905) 847-5882

 info@sandhillconsultants.com



[linkedin.com/company/
sandhill-consultants-na](https://www.linkedin.com/company/sandhill-consultants-na)



@sandhillna