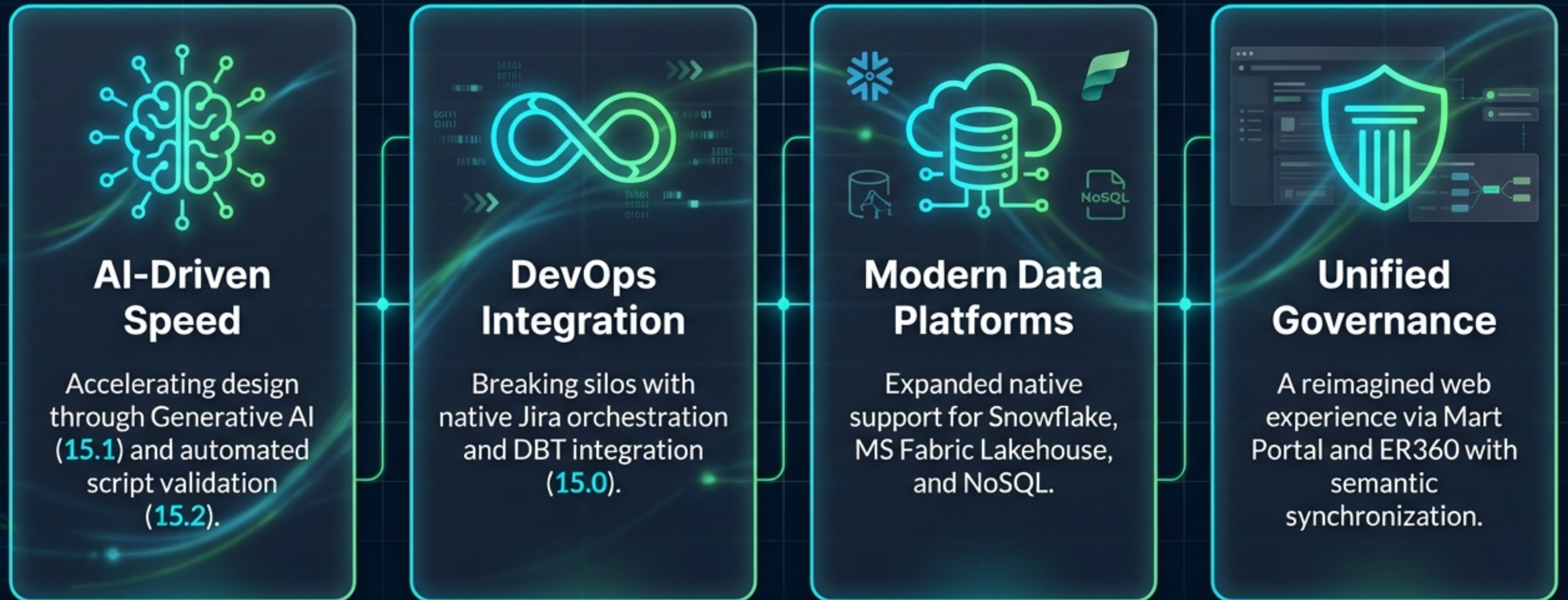


# erwin Data Modeler: The 15.x Series Feature Tour

Enhancements & Innovations across  
Releases 15.0, 15.1, and 15.2

# The Intelligent & Connected Data Fabric

The 15.x series transforms the tool from a standalone modeler into an AI-driven hub for the modern data stack.

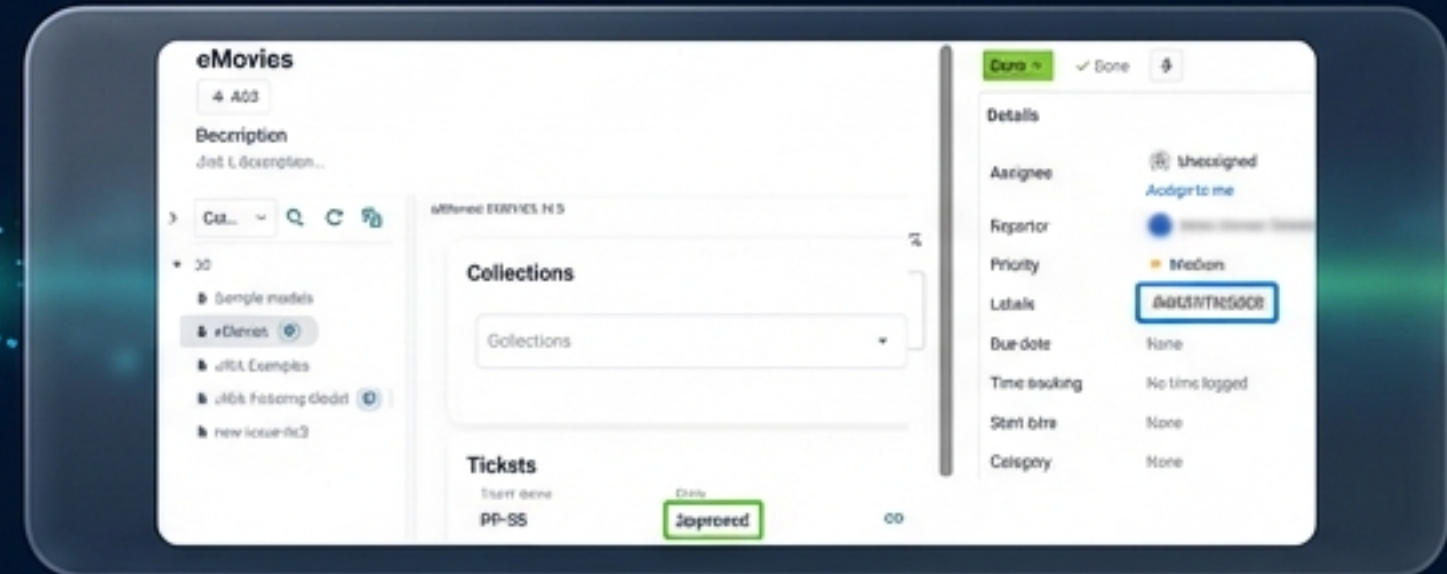




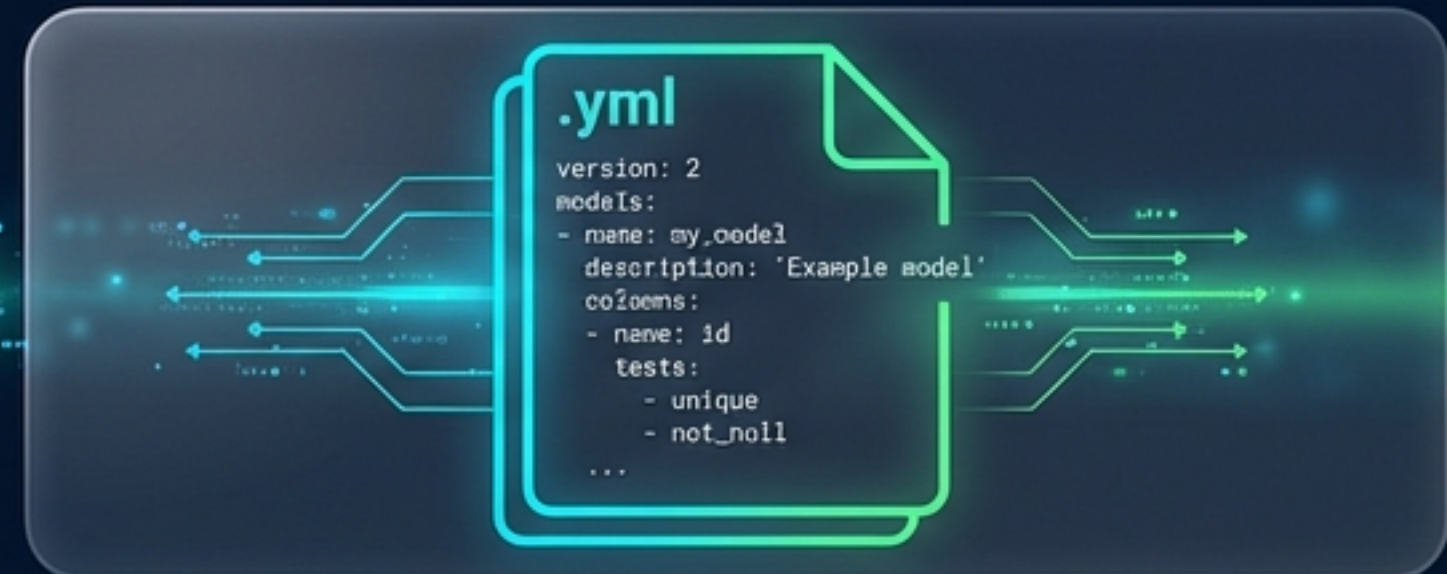
# Bridging Data Design & Delivery



Data Modeler



Orchestration with Jira (15.0): Two-way sync of status and comments prevents context switching.



DBT Integration (15.0): Auto-generate consistent YAML files for data transformation pipelines.

# Supporting the Modern Data Stack

## Snowflake (15.0)

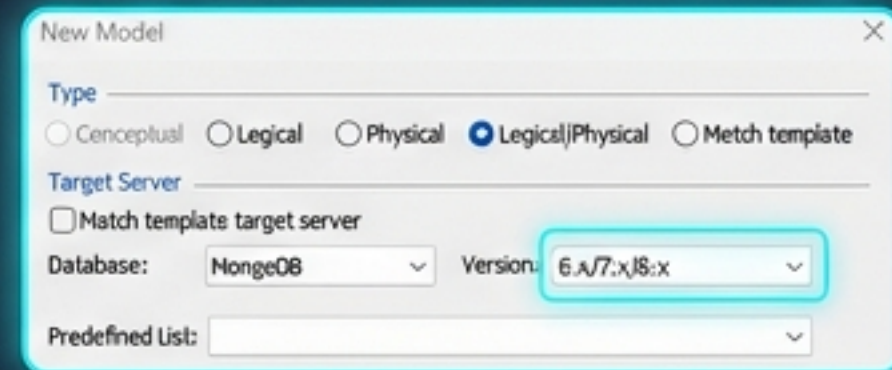
Support for Hybrid Tables, Iceberg Tables, and advanced Indexing.

## Microsoft Fabric (15.1)

Native Lakehouse support aligning with unified analytics.

## MongoDB (15.1)

Certified for versions 7.x and 8.x.



New Model

Type

Conceptual  Logical  Physical  Logical|Physical  Match template

Target Server

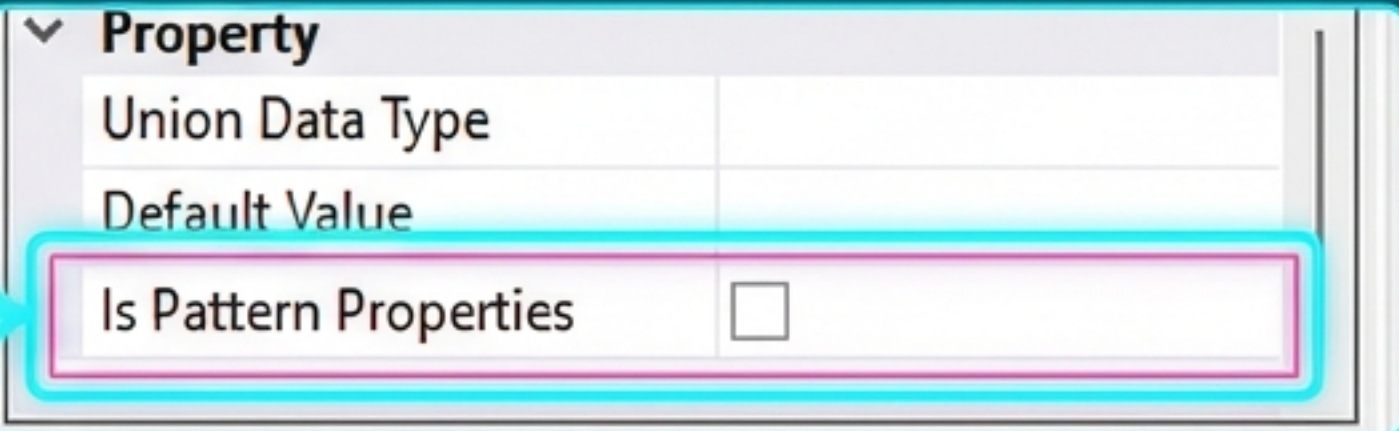
Match template target server

Database: MongoDB Version: 6.x/7.x/8.x

Predefined List:

## JSON Enhancements (15.0)

Regex validation for dynamic fields.



Property	
Union Data Type	
Default Value	
Is Pattern Properties	<input type="checkbox"/>

# Expanding Modeling Capabilities: From API to Concept

## Technical: OpenAPI Specification (15.0)

```
1 openapi: 3.0.0
2 info:
3   title: 'Appointment API'
4   version: '1.0.0'
5 paths:
6   /appointments:
7     get:
8       summary: 'List appointments'
9       responses:
10        '200':
11          description: 'A list of appointments'
12          content:
13            application/json:
14              schema:
15                type: array
16                items:
17                  $ref: '#/components/schemas/Appointment'
```

Model-driven API design ensures consistency between data structures and API definitions.

Full Lifecycle Coverage

## Abstract: Conceptual Modeling (15.2)

appointments

doctors

patients

prescriptions

High-level concepts facilitate 'big picture' planning before technical implementation.

# The Web Experience: Mart Portal Governance

Visual insights on usage trends and contributors (15.2).

The screenshot displays the 'Enterprise Glossary' web application. The main dashboard provides a high-level overview with three KPI cards: 'Total Glossaries' at 38 (up 100% last 7 days), 'Total Business Terms' at 86 (up 100% last 7 days), and 'Total Associations' at 2. Below these are several analytical widgets: a 'Glossary Monthly Stats' bar chart showing data for Jul, Aug, and Sept; 'Glossary Top Contributors' and 'Terms Top Contributors' lists; and 'Glossaries with most Terms' and 'Glossaries with Most Associations'. A 'Business Term Editor' modal is open, allowing for the creation of a new business term. It includes a 'Name' field, a 'Definition' field with a rich text editor (highlighted with a red box), and a 'Description' field with another rich text editor (also highlighted with a red box). At the bottom of the editor, a 'Custom Properties' section is highlighted with a red box, containing 'Property Name' and 'Property Value' input fields. A speech bubble on the right points to this section, indicating AI-generated definitions and custom property fields.

AI-generated definitions and custom property fields (15.2).

# The Web Experience: erwin ER360 Visualization

## Metadata Indexing (15.0)

Indexed Models

0

Indexing Models

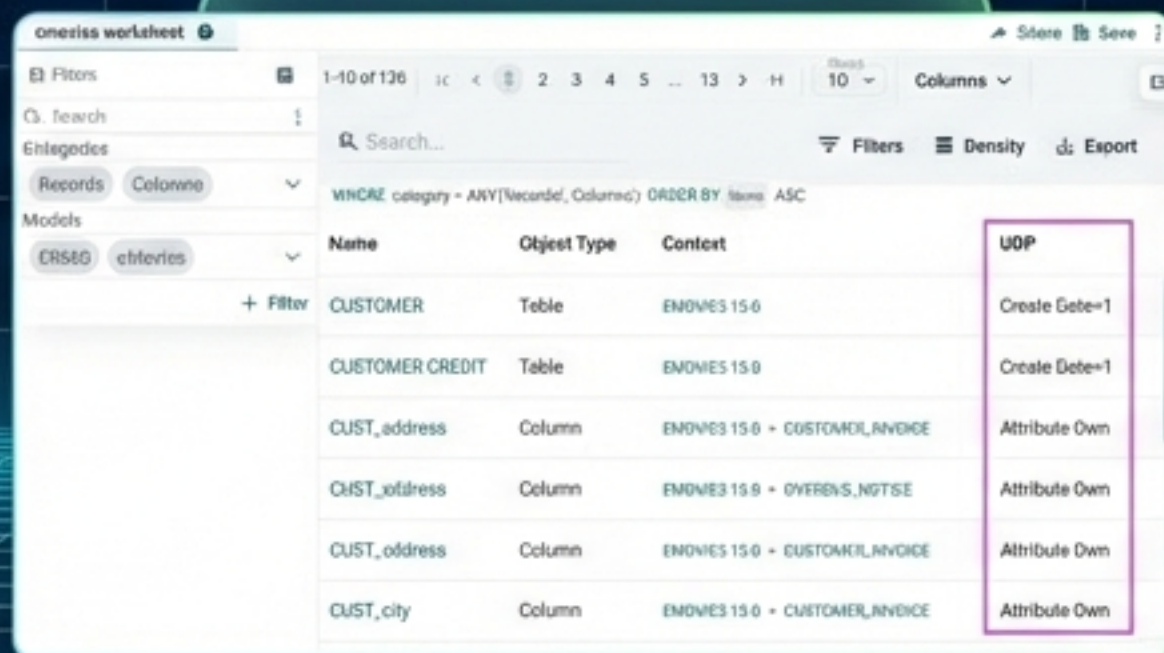
0

Failed Models

0

Automated index job creation upon harvesting.

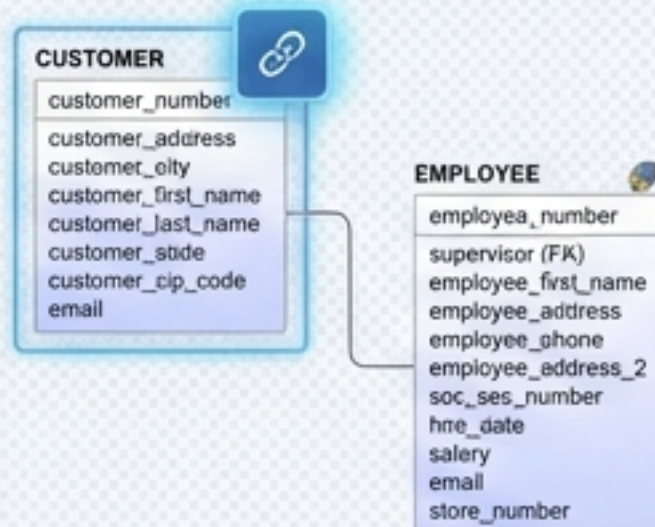
## Advanced Worksheets (15.0)



Name	Object Type	Context	UOP
CUSTOMER	Table	EMP003 15.0	Create Get=1
CUSTOMER CREDIT	Table	EMP003 15.0	Create Get=1
CUST_address	Column	EMP003 15.0 - CUSTOMER_INVOICE	Attribute Own
CUST_address	Column	EMP003 15.0 - OVERSIS_NGTSR	Attribute Own
CUST_address	Column	EMP003 15.0 - CUSTOMER_INVOICE	Attribute Own
CUST_city	Column	EMP003 15.0 - CUSTOMER_INVOICE	Attribute Own

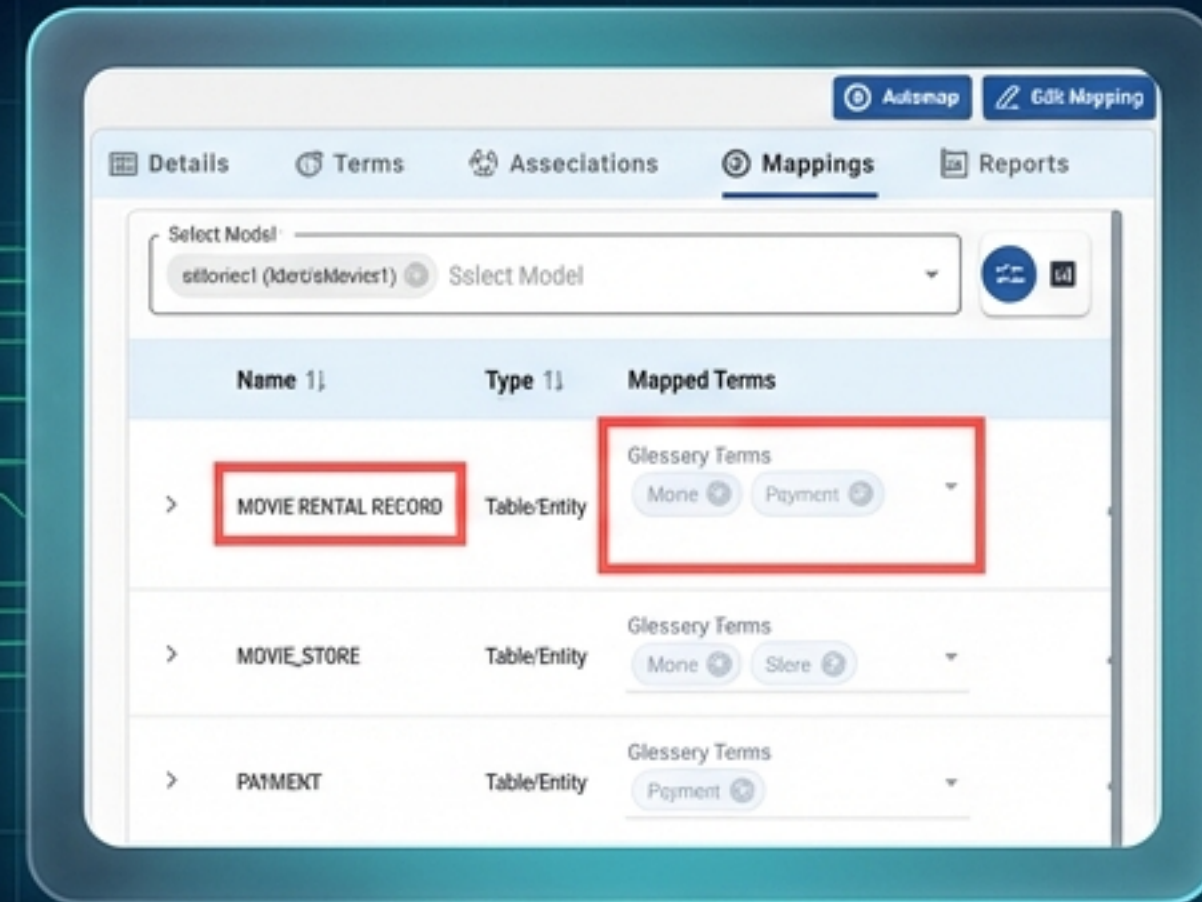
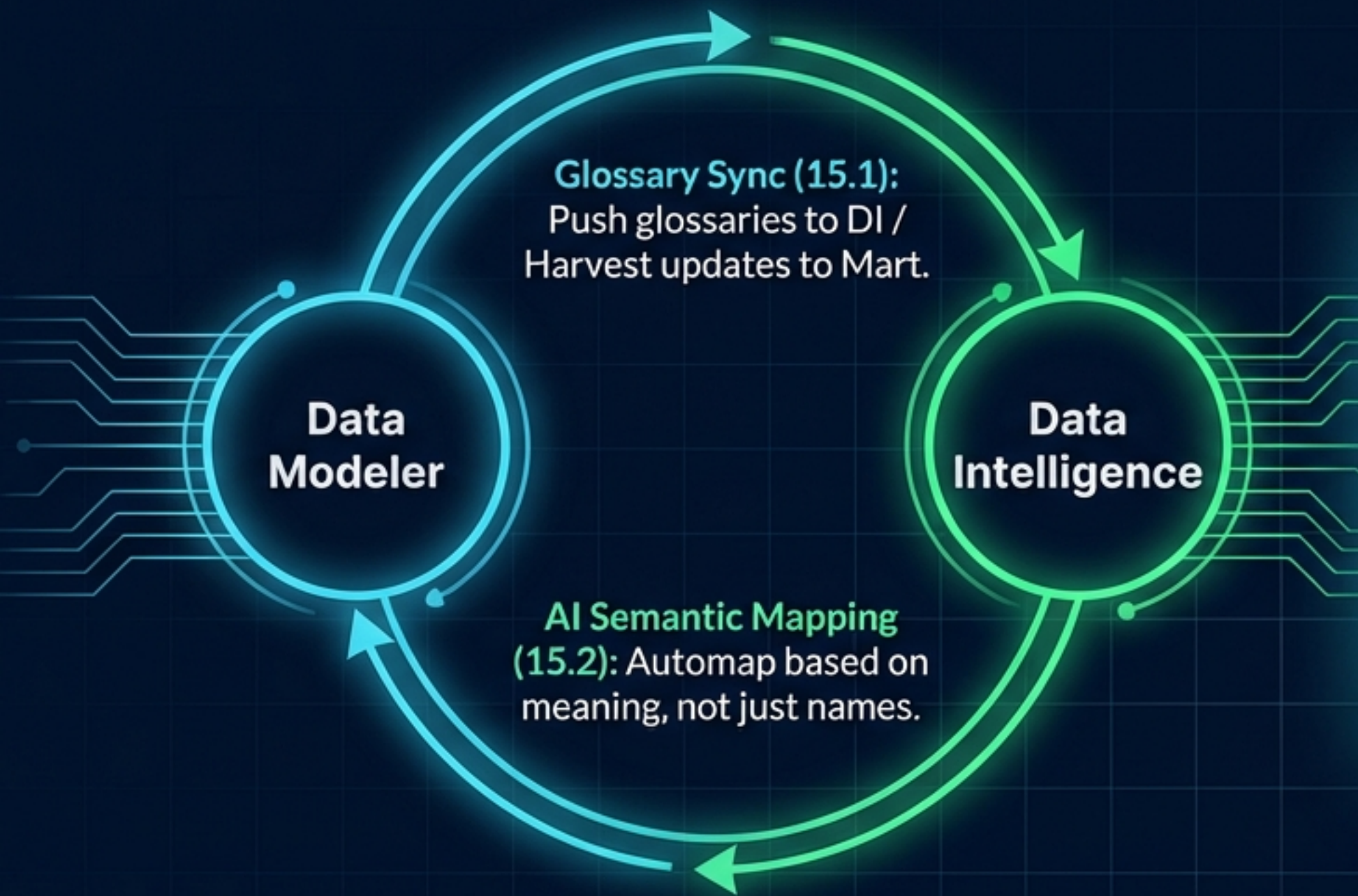
Filter and sort data using User-Defined Properties.

## Diagram Fidelity (15.1)



Visual indicators for Shortcuts/Clones and improved line rendering.

# Unifying Governance (DM ↔ DI)



AI semantic mapping intelligently links 'Movie Rental' to 'Payment' without exact string matching.

# Snapshot: Release 15.0

## Integration

- ✓ Jira Orchestration (Two-way sync)
- ✓ DBT Integration (YAML generation)

## Modeling & Database

- ✓ OpenAPI Specification (OAS) Models
- ✓ Snowflake (Hybrid/Iceberg/Index)
- ✓ JSON Pattern Properties
- ✓ PostgreSQL Permissions Editor Roboto Mono

## Web (Mart/ER360)

- ✓ Metadata Indexing automation
- ✓ Worksheets with UDP support
- ✓ Logical Names Export Roboto Mono

# Snapshot: Release 15.1

## AI & Innovation

- ✓ AI-Powered Data Modeling (Reverse Engineering via prompts)

## Platform Support

- ✓ Microsoft Fabric Lakehouse support
- ✓ NoSQL Data Source and Link Tab enhancements

## Core & Governance

- ✓ Shortcuts & Clones: Reuse entities across models
- ✓ DM Connect for DI: Business Glossary Synchronization

# Snapshot: Release 15.2

## Advanced Modeling

- ✓ Conceptual Modeling (Business-centric views)
- ✓ Neo4j Edge Mapping

## AI & Quality

- ✓ AI-Powered DDL Script Validation
- ✓ AI Semantic Mapping (Automap)

## Mart Portal

- ✓ Enterprise Glossary Dashboard
- ✓ AI Text Generation for Business Terms
- ✓ Custom Properties for Terms

# The Value of Upgrading

## Reduce Manual Effort

- ✓ AI generation and validation cuts setup time.

## Intelligent Data Fabric

## Improve Visibility

- ✓ Unified web dashboards and Jira integration.

## Future-Proof

- ✓ Native support for Fabric, Snowflake, and Modern NoSQL.

**Upgrade to 15.2**